



An overview of lead poisoning
鉛毒淺談

Ho Wing Shing



http://mytv.tvb.com/tc/cat_info/newsfile/216195

無線新聞檔案 1994 (重溫2015.08.14)



Heavy metals 重金屬

- Lead 鉛
- Zinc 鋅
- Cadmium 鎘
- Arsenic 砷
- Chromium 鉻
- Mercury 汞



Sources 來源

- Pipe line 水管
 - Canned food 罐頭
 - Toys 玩具
 - Utility 用具 (battery, solder, etc.)
 - Antique 古董
 - Paint 油漆
 - Fuel 汽油/燃料
- 



Lead poisoning

鉛毒

1500PPM PbNO₃

DAY 9



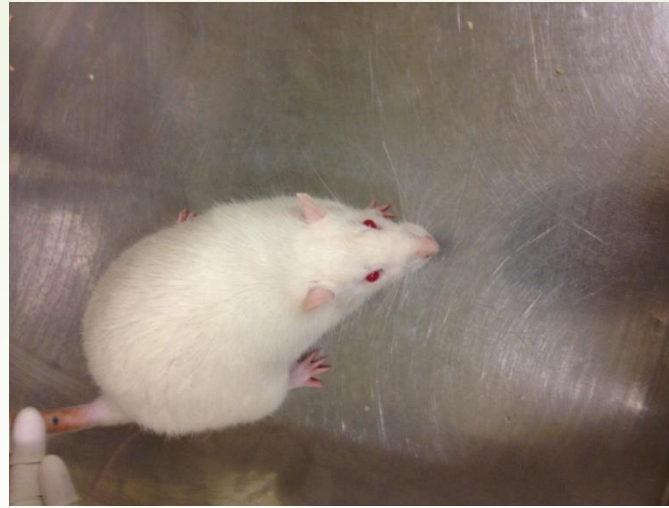
1500PPM PbNO₃



500PPM EDTA

DAY 3

normal



Treated



Un-treated



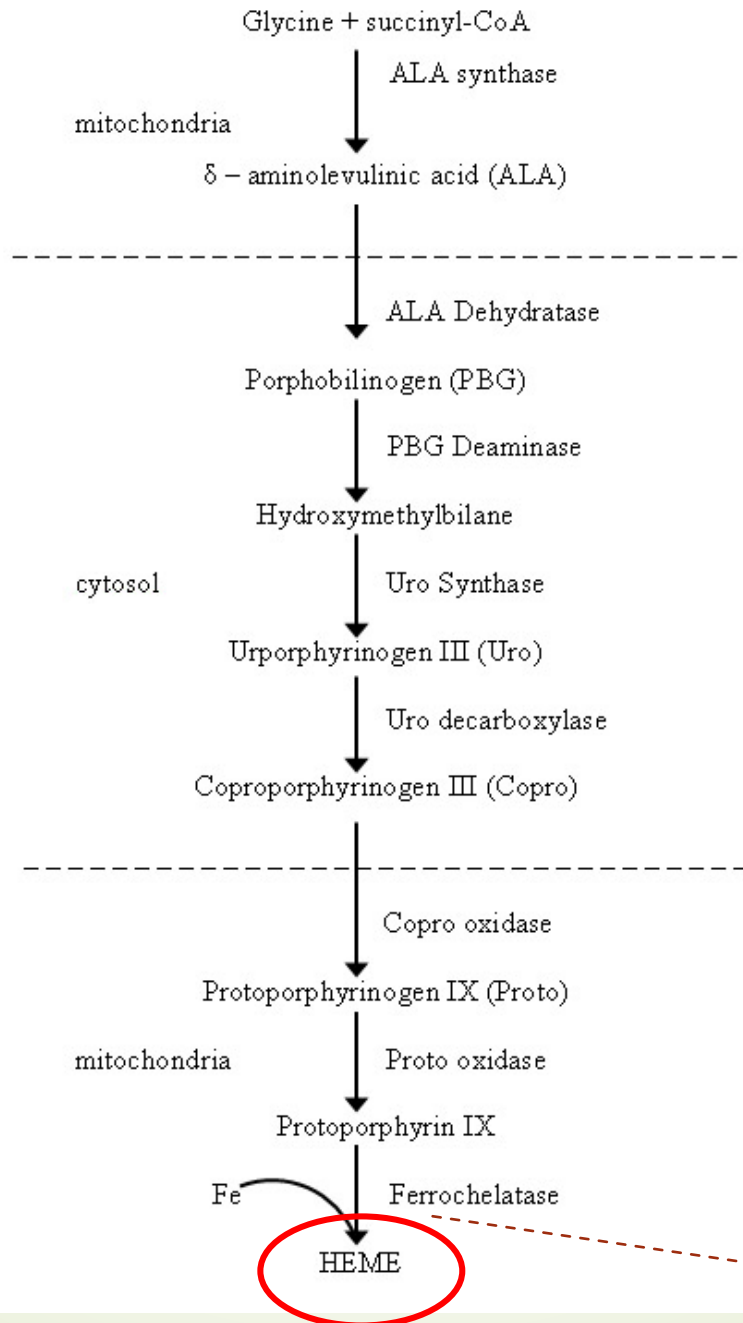
EDTA as a chelator (Ethylenediaminetetraacetic acid)



Lead Poisoning 鉛毒

- ▶ Anemia 貧血
- ▶ Mental retardation 智力遲緩
- ▶ Developmental disorder 發育
- ▶ Behavior disorders 行為

HEME BIOSYNTHESIS PATHWAY



Zinc protoporphyrin

Hemoglobin consists of:

- protein
- Iron cluster
- lipid

